

# GRIPPS®

ANSI/ISEA  
121-2023  
COMPLIANT

## S21628 C5 ECO IMPACT GLOVE

2.3 KG 5.0 LB

MAX LOAD:



EN 388:2016



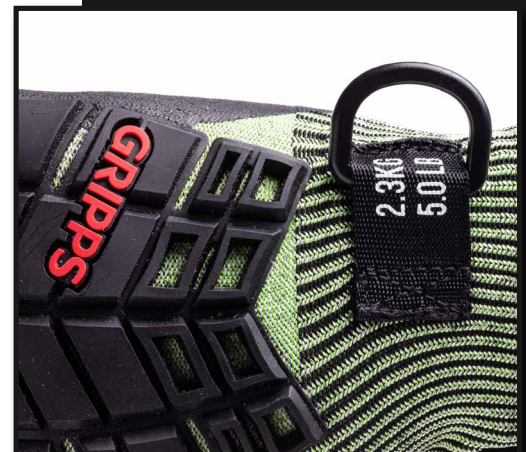
4X43EP



*The GRIPPS® C5 Eco Impact Glove, the first of its kind, stands as a certified carbon-neutral protective industrial glove for workers, equipped with a built-in tether anchor point and crafted from recycled plastic and rubber nitrile*

Acknowledging the need to address carbon emissions and mitigate plastic pollution in oceans, GRIPPS® introduced the GRIPPS® C5 Eco Impact Glove. These gloves actively contribute to combatting both issues while ensuring users benefit from substantial protection and enhanced dexterity.

- In-built load-rated tether anchor point
- Provides a CO2 reduction of 227 grams per pair
- Water consumption savings of 5.15 litres per pair
- Our manufacturing process provides energy savings of 0.387 kwph per pair



ENGINEERED FOR DROP PREVENTION

[gripps.com](http://gripps.com)

## KEY FEATURES

Reinforced Thumb  
crotch for extra  
protection



Ultra-Armour TPR  
Rear, protecting  
against the impact  
on the backs of  
hands

Made from  
recycled plastic  
& rubber nitrile  
(Every pair is  
made from 1x  
recycled plastic  
bottle!)

Carbon Neutral  
Certified

Water-Resistant

**Load-rated  
tether anchor  
point**

Compatible with  
GRIPPS® wrist  
tethers.

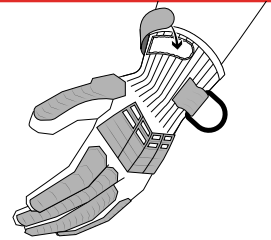
Impact  
padding and  
super  
lightweight  
HPPE knit liner

Maintain the  
whole usability  
of tools.

Superior level  
of comfort

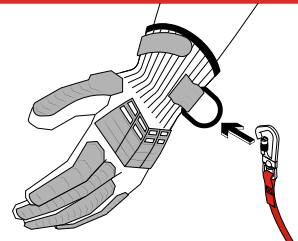
## HOW TO USE

**1**



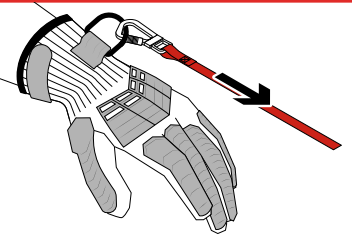
Choose correct size of glove and put on.

**2**



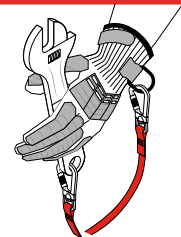
Attach a GRIPPS® wrist tether to the  
load-rated tether anchor.

**3**



Pull firmly on the tether to ensure that the  
connection is secure.

**4**



You can now work at height with your  
GRIPPS® gloves.

**\*NEVER EXCEED MAX LOAD 2.3kg/5.0lbs.**

**\*NEVER EXCEED MAX TETHER LENGTH  
25cm/9.8"**

## SPECIFICATIONS

SKU	MAX LOAD	MAX TETHER LENGTH	SIZE	ANSI/ISEA 105 2016 RATING
S21627-S	2.3kg   5.0lb	25cm   9.8in	Small	A5
S21627-M			Medium	
S21627-L			Large	
S21627-XL			Extra Large	
S21627-2XL			2 XL	
S21627-3XL			3 XL	

EN STANDARD	CUT LEVEL RATING	COATING	GAUGE	CERTIFIED
EN 388: 2016 4X43EP	A5	Double-coated sandy foam nitrile	13	Carbon Neutral Certified