

# GRIPPS®

## H01147

# GRIPPS TETHERING STATION - 20T

*The GRIPPS® Tethering Station, known as the GTS-20T, is a versatile mobile workstation designed for various environments. Crafted from an exceptionally durable 26oz. canvas, the station minimises the use of metals and features non-conductive tether anchors.*

For tasks performed at elevated heights, secure the GRIPPS® Tethering Station to scaffold tubes, handrails, or elevated working platform (EWP) cages using the load-rated and resilient straps. Reinforced eyelets enable flexible hanging with hooks or securing with rope, accommodating a wide range of environments.

With a rigid backboard that prevents twisting or distortion, the GRIPPS® Tethering Station offers numerous options for a comprehensive tool kit setup. Dual general-purpose pouches, fortified with inner-stitched plating, are ideal for battery tools. The station includes stretch-webbing and canvas sheaths to keep your complete kit of hand tools, heavy equipment, and accessories organised and easily accessible.

Strategically positioned tether anchors ensure each tool is securely tethered and within reach, with each tether anchor load rated and nonconductive. Two dual-action carabiners provide additional anchoring and tethering possibilities, enhancing the overall functionality of the tethering station.



**1** KG **2.2** LB  
**MAX LOAD:**



**ENGINEERED FOR DROP PREVENTION**

[gripps.com](http://gripps.com)

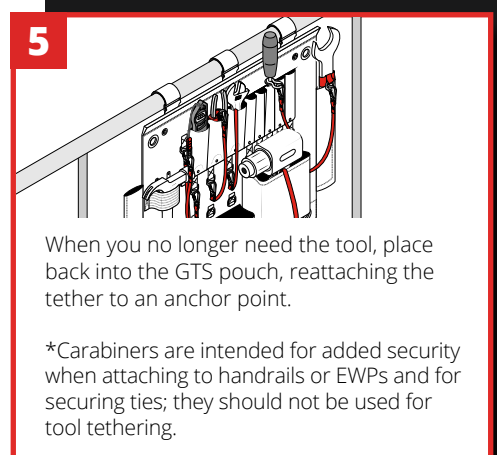
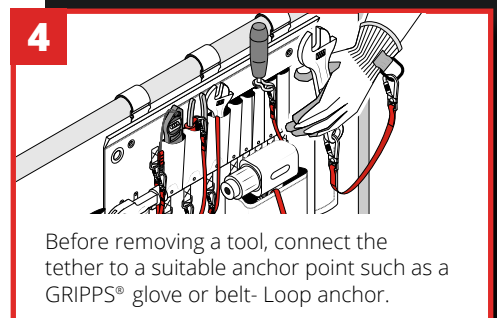
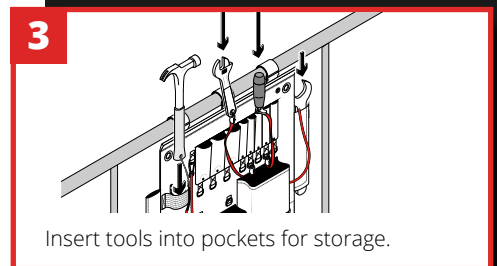
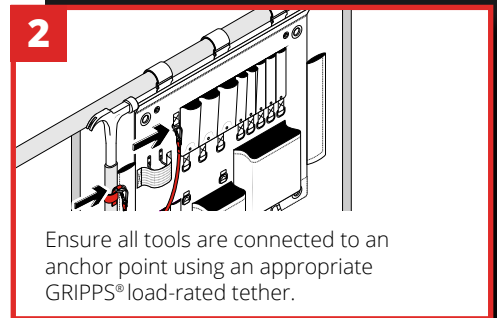
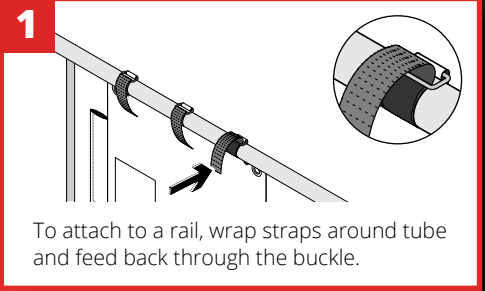
## KEY FEATURES



## SPECIFICATIONS

SKU	MAX LOAD (D-RING)	SIZE
H01147	1kg   2.2lbs	60cm x 55cm   24in x 22in

\*Last update 13.03.25



@GRIPPSGLOBAL



#ConquerGravity