

GRIPPS®

ANSI/ISEA
121-2018
COMPLIANT

H02056 TAPE MEASURE CATCH

Designed to seamlessly integrate with a wide range of tape measure brands spanning from 5m - 8m (16' - 26') in length, the GRIPPS® Tape Measure Catch ensures the full functionality of your tape measure while enhancing safety during elevated work.

When paired with a GRIPPS® Tether, GRIPPS® Tape Measure Latch, or GRIPPS® Tape Measure Holster, the GRIPPS® Tape Measure Catch offers comprehensive protection for workers operating at heights.



0.7 KG **1.5** LB
MAX LOAD



ENGINEERED FOR DROP PREVENTION

GRIPPS.COM

KEY FEATURES

Compatible with the GRIPPS® Tape Measure Latch and GRIPPS® Tape Measure Holster.



Can be worn on or off a work belt.

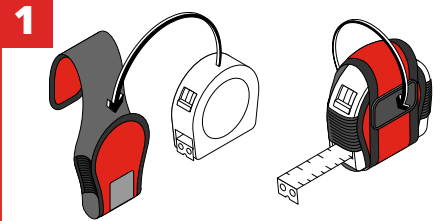
Compatible with most tape measure brands and sizes from 5m - 8m/16.5' - 26'.

Maintains full tape measure functionality while secured.

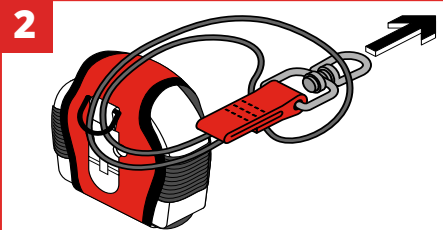
SPECIFICATIONS

SKU	MAX LOAD
H02056	0.7KG 1.5LB

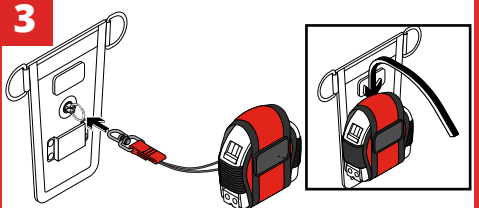
HOW TO USE



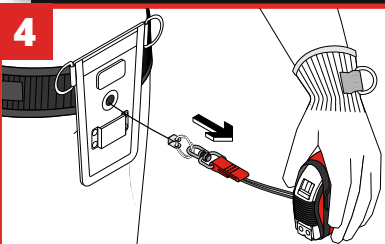
Place the tape measure into catch.



If using a GRIPPS® Swivel Catch, feed the cord through the D-ring on the back of the Tape Measure Catch. Then attach to the tool ring on the retractor unit.



The Tape Measure Catch can now slide onto the Tape Measure Latch.



Attach the holster to your work belt by the sliding belt through the rear straps of the Tape Measure Latch Holster.

@GRIPPSGLOBAL



#ConquerGravity