

GRIPPS®

H01307 MODULAR DROP MAT

The GRIPPS® Modular Drop Mat is crafted from robust, self-extinguishing canvas, providing a secure personal work space for tasks carried out on grid mesh or steel grate flooring.

Grid mesh and steel grate flooring pose significant risks for dropped object incidents. The GRIPPS® Modular Drop Mat effectively addresses this concern by enabling workers to perform various tasks without the worry of small objects slipping through the mesh.

Strategically placed, load-rated tether anchor points enable workers to tether tools weighing up to 3kg/6.6lb to the mat. Velcro knee pads enhance practicality and comfort, and they can be easily repositioned and reattached to the drop mat, adapting to diverse work environments.



3_{KG}

6.6_{LB}

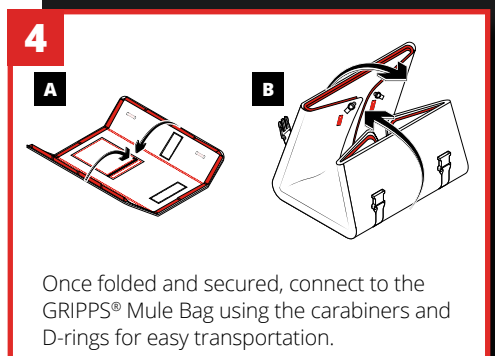
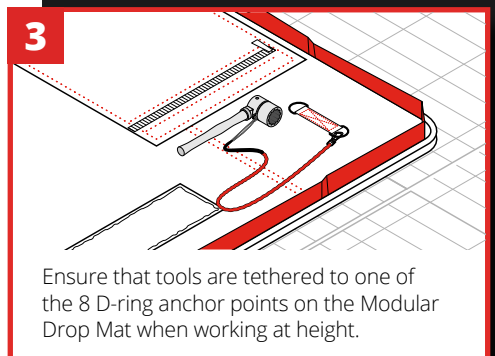
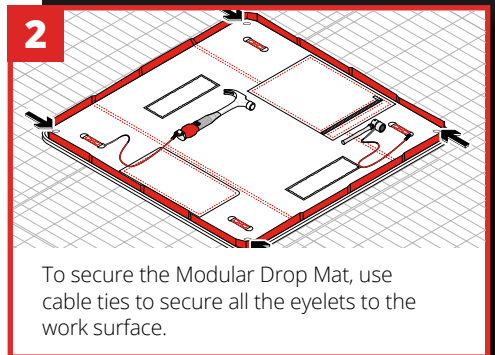
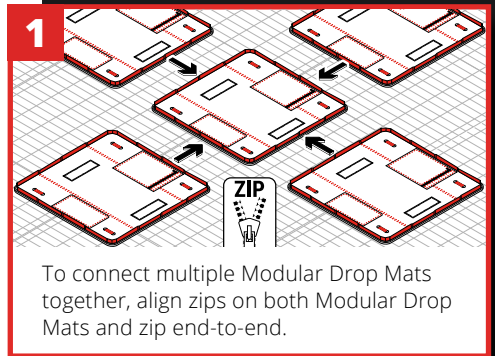
MAX LOAD



ENGINEERED FOR DROP PREVENTION

GRIPPS.COM

KEY FEATURES



SPECIFICATIONS

SKU	MAX LOAD (D-RING)	SIZE (WHEN OPEN)	SIZE (WHEN FOLDED)
H01307	3KG 6.6LB	110cm x 110cm x 5cm 43in x 42in x 2in	53cm x 28cm x 9.0cm 21in x 11in 3.5in

@GRIPPSGLOBAL



#ConquerGravity