

GRIPPS®

ANSI/ISEA
121-2023
COMPLIANT

H02059 RETRACTABLE TAPE MEASURE LATCH KIT

Designed to seamlessly integrate with a wide range of tape measure brands spanning from 5m - 8m (16in - 26in) in length, the GRIPPS® Retractable Tape Measure Latch Kit ensures the full functionality of your tape measure while enhancing safety during elevated work.

The GRIPPS® Retractable Tape Measure Latch Kit offers comprehensive protection for workers operating at heights.

Kit includes:

- 1 x H02057 GRIPPS® Tape Measure Latch
- 1 x H01120 GRIPPS® Steel Cable Retractor Unit - 0.7kg
- 1 x H02056 GRIPPS® Tape Measure Catch
- 1 x H01021 GRIPPS® Swivel Catch

Measuring tape **NOT** included.



2.5 KG

5.5 LB

MAX LOAD (D-RING)

0.7 KG

1.5 LB

MAX LOAD (RETRACTOR)



*Tape Measure not included.



*Tape Measure not included.

ENGINEERED FOR DROP PREVENTION

GRIPPS.COM

KEY FEATURES

Lightweight design with industrial toughness.

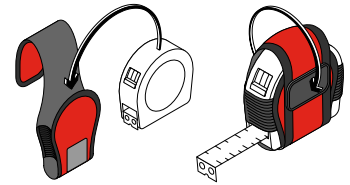


*Tape Measure not included.

SPECIFICATIONS

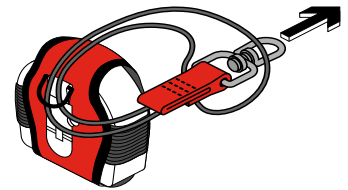
SKU	MAX LOAD (D-RING)	MAX LOAD (RETRACTOR)	MAX LENGTH (RETRACTOR)	MAX TETHER LENGTH
H02059	2.5kg 5.5lb	0.7kg 1.5lb	1.2m 47in	1.3m 51in

1



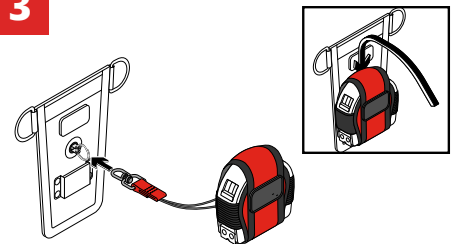
Place the tape measure into catch.

2



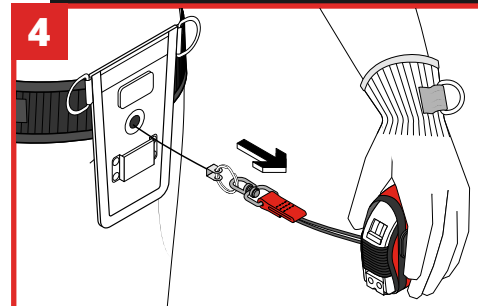
If using a GRIPPS® Swivel Catch, feed the cord through the D-ring on the back of the Tape Measure Catch. Then attach to the tool ring on the retractor unit.

3



The Tape Measure Catch can now slide onto the Tape Measure Latch.

4



Attach the holster to your work belt by the sliding belt through the rear straps of the Tape Measure Latch Holster.

@GRIPPSGLOBAL



#ConquerGravity